

LYONS WEST AGR P.U.D. - PLAT TWO

BEING A REPLAT OF TRACTS 76, 77, 92 AND 93, ALL LYING WITHIN BLOCK 53, PALM BEACH FARMS CO. PLAT NO. 3, PLAT BOOK 2, PAGES 45 THROUGH 54, PUBLIC RECORDS, PALM BEACH COUNTY, FLORIDA. ALL LYING WITHIN SECTION 30, TOWNSHIP 45 SOUTH, RANGE 42 EAST, PALM BEACH COUNTY, FLORIDA.

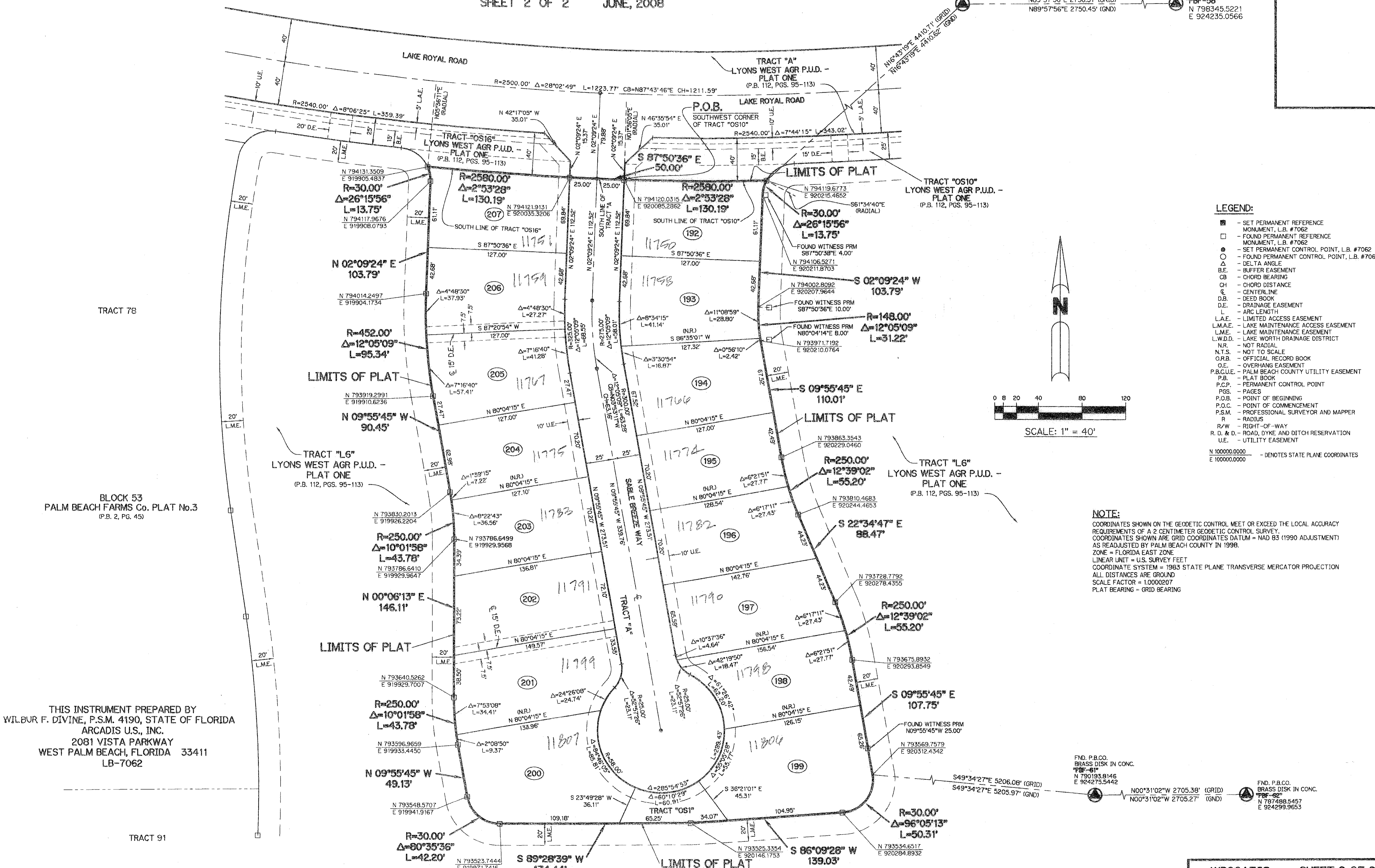
SHEET 2 OF 2 JUNE, 2008

FND. P.B.CO. BRASS DISK IN CONC. **PBF-57**
N 798343.8698
E 921484.5507

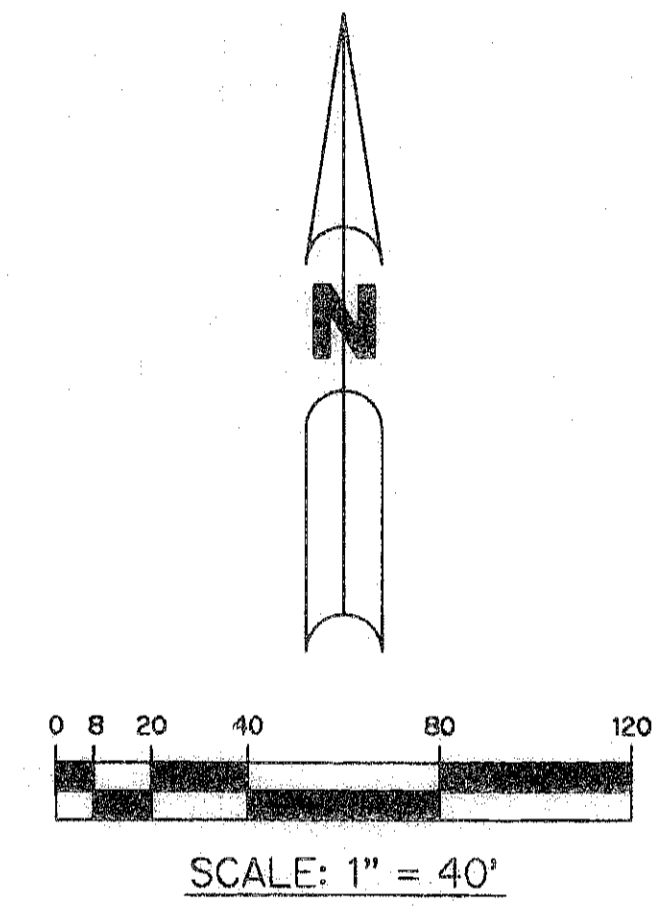
FND. P.B.CO. BRASS DISK IN CONC. **PBF-58**
N 798345.5221
E 924235.0566

N89°57'56"E 2750.51' (GRID)
N89°57'56"E 2750.45' (GND)

N10°45'19"E 4410.71' (GRID)
N10°45'19"E 4410.82' (GND)



- LEGEND:**
- - SET PERMANENT REFERENCE MONUMENT, L.B. #7062
 - - FOUND PERMANENT REFERENCE MONUMENT, L.B. #7062
 - - SET PERMANENT CONTROL POINT, L.B. #7062
 - - FOUND PERMANENT CONTROL POINT, L.B. #7062
 - △ - DELTA ANGLE
 - B.E. - BUFFER EASEMENT
 - CB - CHORD BEARING
 - CH - CHORD DISTANCE
 - C.L. - CENTERLINE
 - D.B. - DEED BOOK
 - D.E. - DRAINAGE EASEMENT
 - L - ARC LENGTH
 - L.A.E. - LIMITED ACCESS EASEMENT
 - L.M.A.E. - LAKE MAINTENANCE ACCESS EASEMENT
 - L.M.E. - LAKE MAINTENANCE EASEMENT
 - L.W.D.D. - LAKE WORTH DRAINAGE DISTRICT
 - N.R. - NOT RADIAL
 - N.T.S. - NOT TO SCALE
 - O.R.B. - OFFICIAL RECORD BOOK
 - O.E. - OVERHANG EASEMENT
 - P.B.C.U.E. - PALM BEACH COUNTY UTILITY EASEMENT
 - P.B. - PLAT BOOK
 - P.C.P. - PERMANENT CONTROL POINT
 - PGS. - PAGES
 - P.O.B. - POINT OF BEGINNING
 - P.O.C. - POINT OF COMMENCEMENT
 - P.S.M. - PROFESSIONAL SURVEYOR AND MAPPER
 - R - RADIUS
 - R/W - RIGHT-OF-WAY
 - R.D. & D. - ROAD, DYKE AND DITCH RESERVATION
 - U.E. - UTILITY EASEMENT
 - N 1000000.0000
E 1000000.0000 - DENOTES STATE PLANE COORDINATES



NOTE:
COORDINATES SHOWN ON THE GEODETIC CONTROL MEET OR EXCEED THE LOCAL ACCURACY REQUIREMENTS OF A 2 CENTIMETER GEODETIC CONTROL SURVEY. COORDINATES SHOWN ARE GRID COORDINATES DATUM = NAD 83 (1990 ADJUSTMENT) AS READJUSTED BY PALM BEACH COUNTY IN 1998. ZONE = FLORIDA EAST ZONE. LINEAR UNIT = U.S. SURVEY FEET. COORDINATE SYSTEM = 1983 STATE PLANE TRANSVERSE MERCATOR PROJECTION. ALL DISTANCES ARE GROUND. SCALE FACTOR = 1.0000207. PLAT BEARING = GRID BEARING.

THIS INSTRUMENT PREPARED BY
WILBUR F. DIVINE, P.S.M. 4190, STATE OF FLORIDA
ARCADIS U.S., INC.
2081 VISTA PARKWAY
WEST PALM BEACH, FLORIDA 33411
LB-7062

FND. P.B.CO. BRASS DISK IN CONC. **PBF-51**
N 790193.8146
E 924275.5442

FND. P.B.CO. BRASS DISK IN CONC. **PBF-52**
N 790498.5457
E 924299.9653

S49°34'27"E 5206.08' (GRID)
S49°34'27"E 5205.97' (GND)

N00°31'02"W 2705.38' (GRID)
N00°31'02"W 2705.27' (GND)